

TLT235SB

Economical

Features

- Bilateral manual safety unlocking system.
- The cable and oil pipe are fully concealed; with decent and elegant appearance.
- Double hydraulic cylinder and high strength chain drive makes stable and smooth lifting and lowering.
- Wire rope equalization system forces synchronous movement of two carriages and effectively prevents vehicle form tilting.
- 24V low voltage control box (IP54 level) ensures operator's safety.
- 24V cylinder travel limit switch effectively protects cylinder and extends its lifespan.
- Door rubber pad protects car door from being damaged in collision.
- More lifting pads with different height meets the requirements for light lorries and SUVs.
- Passed 115% dynamic loading test and 150% static loading test .
- CE certificated.



Optional parts

90mm square low lifting tray accessory(adjustment range:25-90mm)	Extension sleeve 90、125、140mm
	

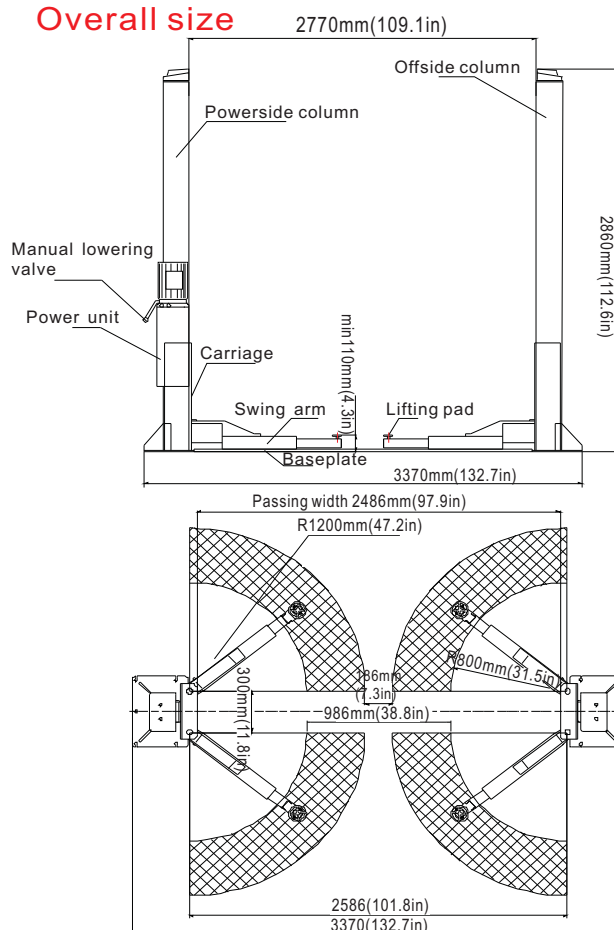
Technical parameters

Rated load:	3500kg
Lifting height:	1850mm
Initial height:	110mm
Lifting time:	≤50s
Lowering time:	≥20s≤40s
Passing width:	2486mm
Overall width:	3370mm
Overall height:	2860mm
Motor power :	2.2kw
Motor voltage:	3 phase/380v or Single phase/220V
Working noise:	≤75dB (A)
Working oil pressure:	16M Pa

Configuration instructions

		Basic	CE Standard
Swing arm	2stage(800-1200)*4	●	●
Unlocking system	Bilateral manual pull	●	●
Power unit	Domestic (Underneath) 2.2KW 10L	●	●
Control box	Electric control box		●
Lifting pad	Double screws lifting pad	●	●
Safety device	Cylinder travel limit module , button box,anti-explosion valve,guardrail		●
Color	Launch red, Launch grey, Volkswagen blue, Hyundai blue, GM blue (Buick blue)	●	●
Warranty	1 year	●	●

Overall size



Environmental Requirement

Working temperature :	-5℃ ~+ 40℃
Transport/storage temperature :	-5℃ ~+ 40℃
Relative humidity :	Temperature+ 30℃,relative humidity 8 0 %
Height above sea level:	No more than 2000m